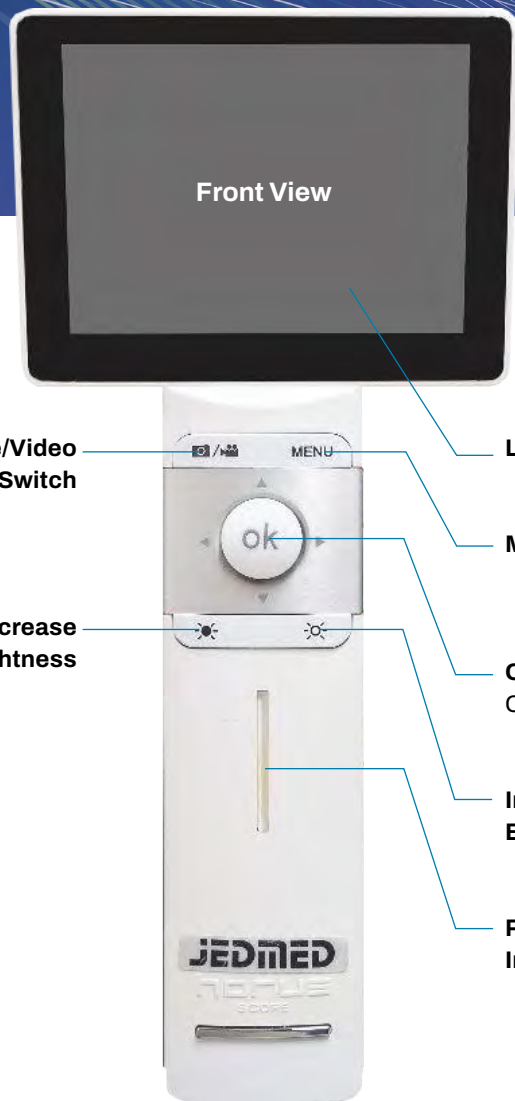


# Horus Scope Series 1

## Quick Start Guide

### Horus Scope Functions and Components

The Horus Scope functions and device components are listed below.



- Picture/Video Mode Switch
- Decrease Brightness
- JEDMED HORUS SCOPE
- LCD Monitor
- Menu Button
- OK Button Capture/Enter
- Increase Brightness
- Power Indicator

Top View



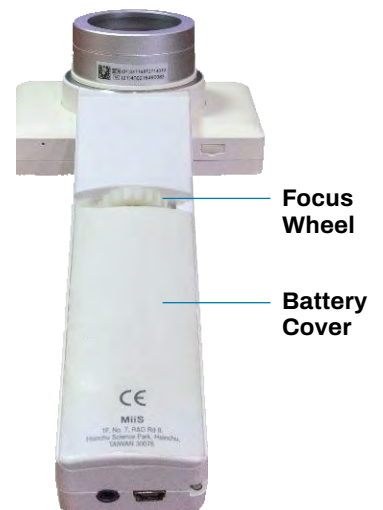
Side View



Bottom View



Rear View



# Basic Horus Scope Operations

## To Power on the Horus Scope:

Press and hold the power button at the top of the unit for two seconds. The Horus Scope will start up. Start-up takes about 20 seconds. Once the start-up procedure is complete the Horus Scope screen will display the live video feed captured by the lens currently attached to the unit.

Power button

Front View



Power button


Top View



## To switch between live video and image capture:

1. Press the OK button on the unit to capture images.



2. Press the  button to return to live view.